

# Extending FOAF to Genealogical Data

---

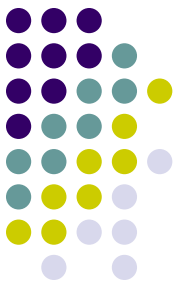
Brian Cassidy - [bpc@unb.ca](mailto:bpc@unb.ca)  
Brian Cassidy Jr - [brian@nald.ca](mailto:brian@nald.ca)



# The Gedcom-FOAF Connection

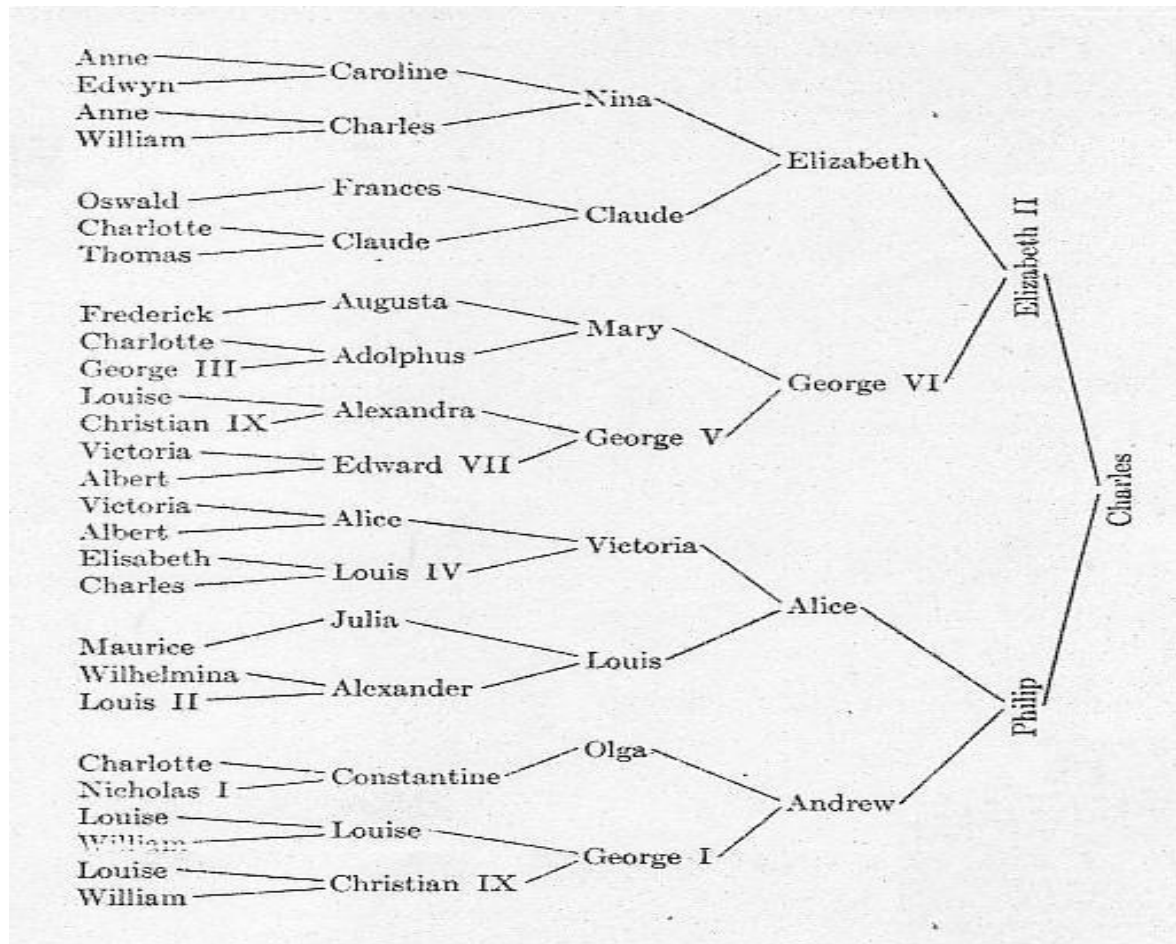


- Pedigree and Lineal Charts
- Chart Display Problem
- Gedcom Overview
- FOAF Overview
- FOAFnaut Demo
- Extending FOAF to Genealogical Data
- Familynaut Demo
- Future Development



# Pedigree Charts

- Looking back in time for a given individual

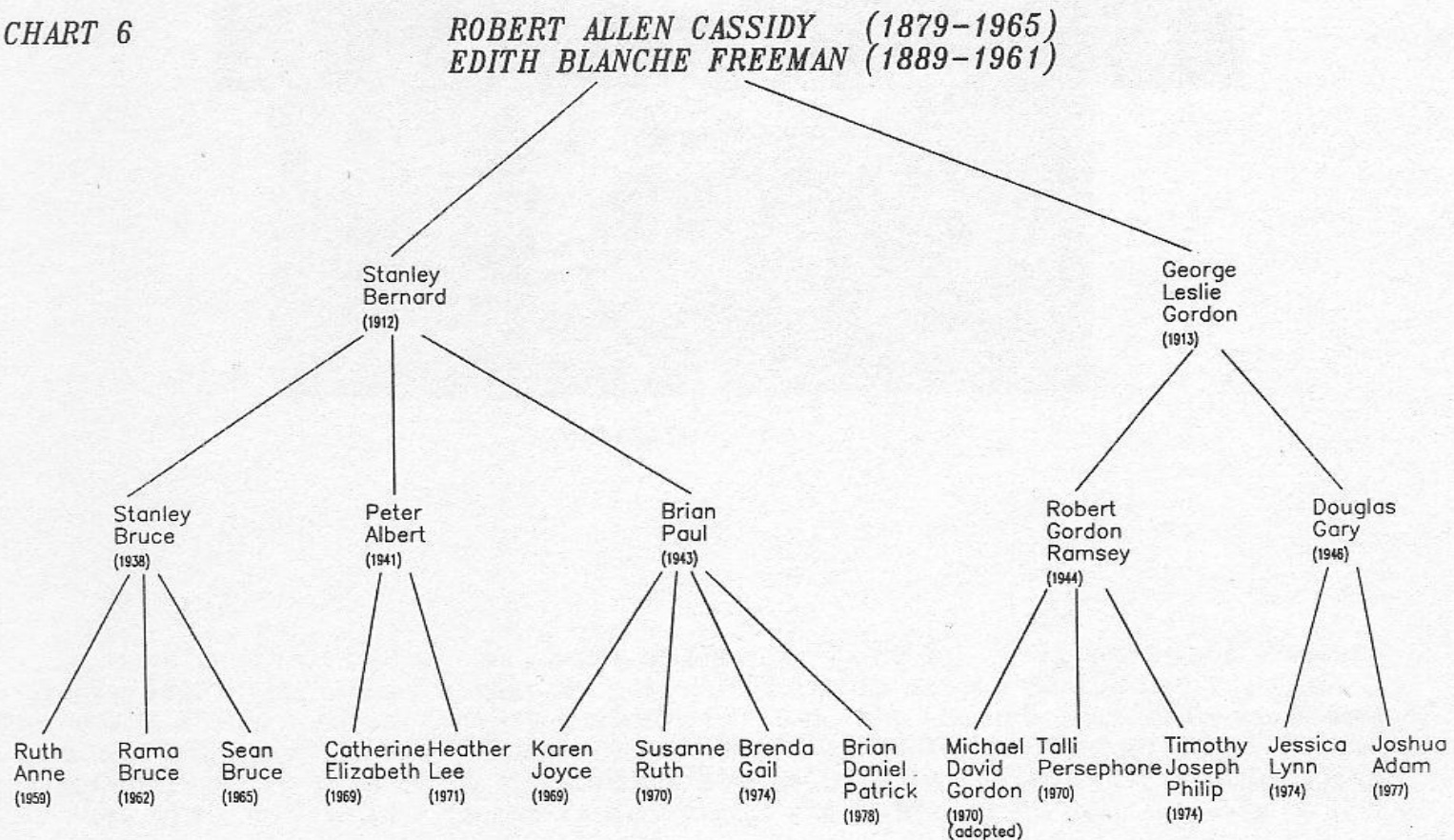




# Lineal (Descendancy) Charts

- Looking forward in time for a given individual

CHART 6





# Chart Display Problem

- Full charts are very large
- Difficult to draw on paper or display on a computer screen
- Charts often computer generated from Gedcom data, but...
- How can we better utilize the limited real estate of a computer screen for chart display?
- Can we have an *interactive* display?



# Gedcom Overview

- Industry standard format for managing genealogy information
- Supported by most common family tree organization software
- Useful for data import and exchange
- Used at [cassidys.ca](http://cassidys.ca) as the foundation for search and display of family data

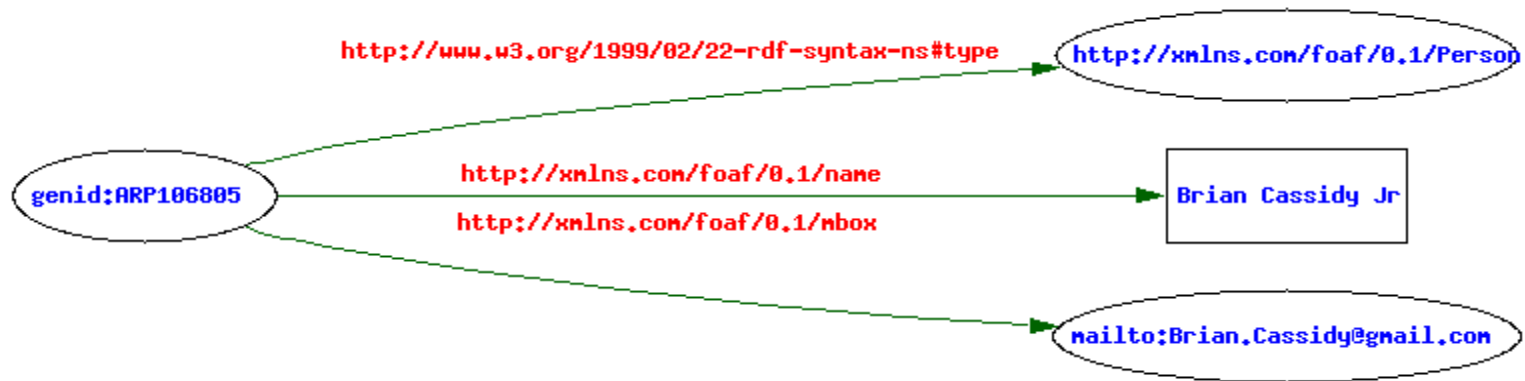
# FOAF Overview



- Metadata for people (describes people)
- Machine readable format
  - E.g Brian Cassidy Jr's email address is `brian@nald.ca`
  - In foaf:

```
<rdf:RDF xmlns:rdf="http://www.w3.org/1999/02/22-rdf-syntax-ns#"
  xmlns:foaf="http://xmlns.com/foaf/0.1/">
<foaf:Person>
<foaf:name>Brian Cassidy Jr</foaf:name>
<foaf:mbox rdf:resource="mailto:brian@nald.ca" />
</foaf:Person>
</rdf:RDF>
```

# As a graph





# Standard FOAF properties



- Name
- Mbox
- Homepage
- Givenname
- Family\_name
- Gender
- Depiction

# Relationships



- The “knows” property links two people together
- E.g. Brian Cassidy Jr, whose email address is brian@nald.ca knows Brian Cassidy Sr, whose email address is bpc@unb.ca
- In foaf:

```
<foaf:Person><foaf:name>Brian Cassidy Jr</foaf:name>  
<foaf:mbox rdf:resource="mailto:brian@nald.ca" />  
<foaf:knows>  
<foaf:Person> <foaf:name>Brian Cassidy Sr</foaf:name>  
<foaf:mbox rdf:resource="mailto:bpc@unb.ca" />  
</foaf:Person></foaf:knows> </foaf:Person>
```

# Groups

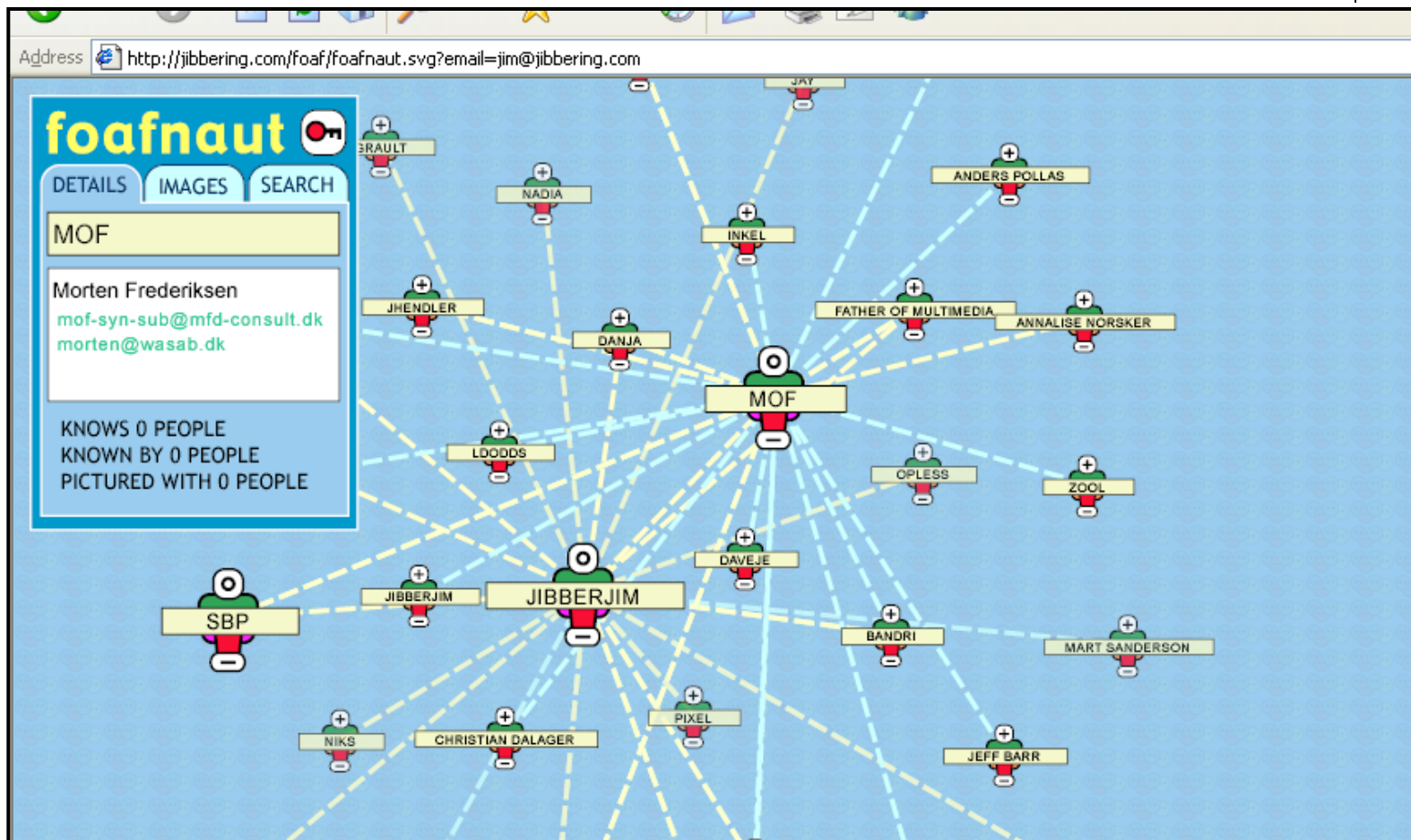


- E.g. Brian Cassidy Jr, whose email address is `brian@nald.ca` and Brian Cassidy Sr, whose email address is `bpc@unb.ca` are members of a group called "The 'B' Team"

- In foaf:

```
<foaf:Group> <foaf:name>The 'B' Team</foaf:name>
<foaf:member> <foaf:Person> <foaf:name>Brian
Cassidy Sr</foaf:name> <foaf:mbox
rdf:resource="mailto:bpc@unb.ca" />
</foaf:Person> </foaf:member>
<foaf:member> <foaf:Person> <foaf:name>Brian
Cassidy Jr</foaf:name> <foaf:mbox
rdf:resource="mailto:Brian.Cassidy@gmail.com" />
</foaf:Person> </foaf:member> </foaf:Group>
```

# FOAFnaut Demo

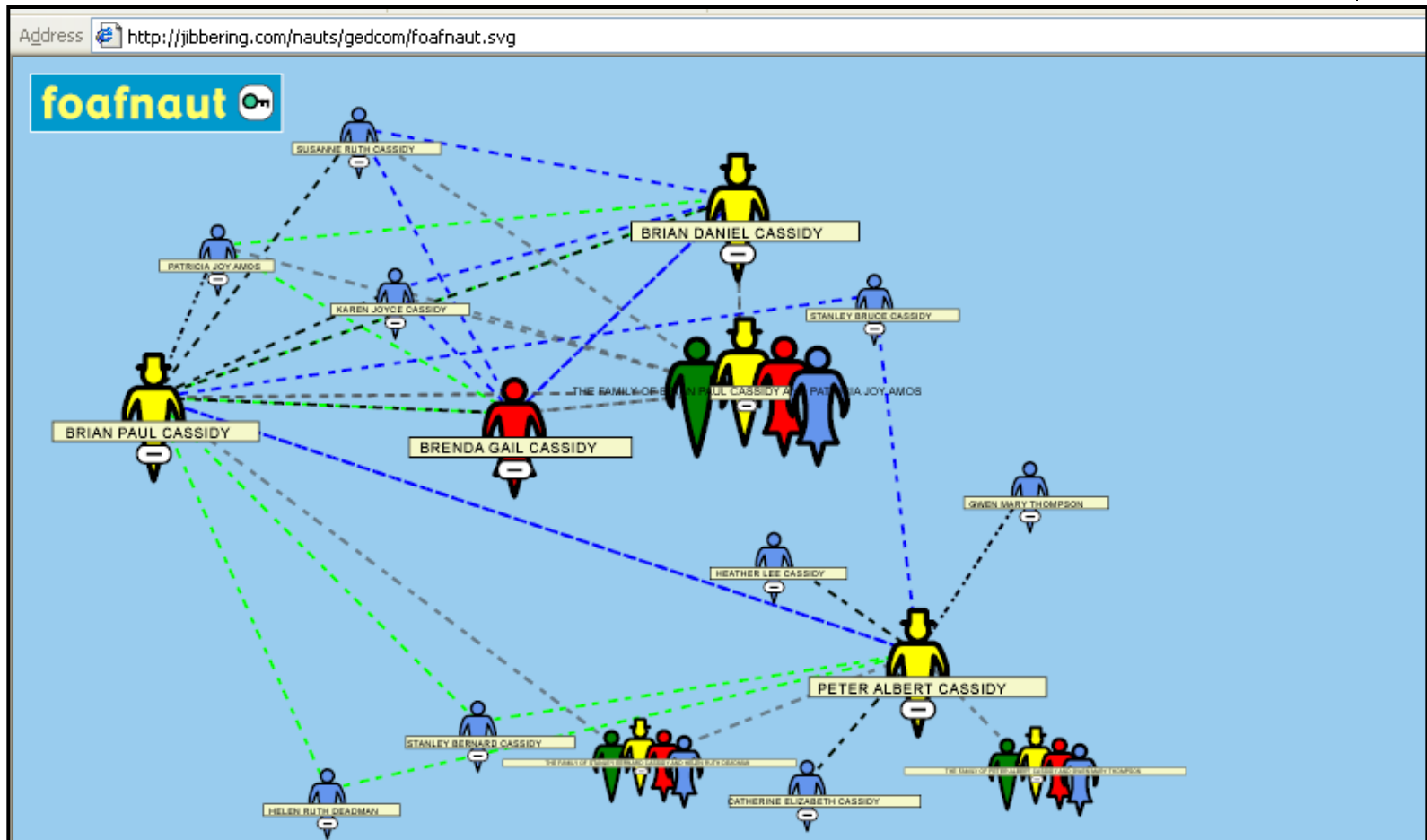




# FOAF Extensions

- Used to add new properties and relationships, in this case with respect to family relationships
  - childOf
  - parentOf
  - siblingOf
  - spouseOf

# Familynaut Demo





# Future Development

- Need better zoom and scrolling features
- Print feature
- Practical access to genealogical data
  - General browse of given family tree
  - Ability to specify any start point (person or family)
  - Show relationship between two individuals
  - Other ideas?
- Integration with [cassidys.ca](http://cassidys.ca) website



# Reference URLs

- <http://www.foaf-project.org>
- <http://www.foafnaut.org>
- <http://www.jibbering.com/nauts/gedcom/foafnaut.svg>
- <http://www.cassidys.ca/history>
- [http://www.familysearch.org/Eng/Home/FAQ/frameset\\_faq.asp?FAQ=faq\\_gedcom.asp](http://www.familysearch.org/Eng/Home/FAQ/frameset_faq.asp?FAQ=faq_gedcom.asp)